

Al - Can you respond directly - He
was the only one interested in the
"gadget." Thank
B.L.

11130 Harrison Ave. So.
Bloomington, MN 55437
July 26, 1983

Mr. Robert Fabris
3626 Morrie Drive
San Jose, CA 95127-9990

Dear Mr. Fabris:

I am inquiring once again regarding the "small gadget which would be the equivalent of the old cassette interface box" mentioned on page 43 of the December 3, 1982 Arcadian. Is anyone making this device available for sale? Or should I go ahead and purchase #ACI-0100 Audio Cassette Interface (300 baud) from one of the vendors who advertise it? Can you put me in touch with Al Rathmell or someone who can tell me how to home-modify the old cassette interface to tap off the proper signals? Will this scheme work with an old model 33 Teletype? I am anxious to hear from you and to have these questions answered.

Also, I am attaching one of the mailing labels from my Arcadian. My copies are getting to me just fine, but I thought you might want to know that my last name is misspelled.

Thank you.

Yours truly,

Dick Reinke
Dick Reinke

1643 Swallow Drive
Sunnyvale, CA 94087
Aug 9, 1983

Dick Reinke
11130 Harrison Ave.
Bloomington, MN

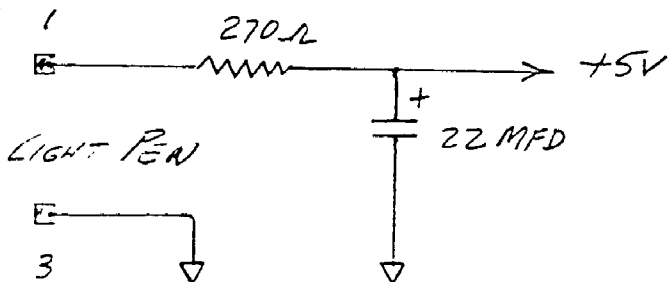
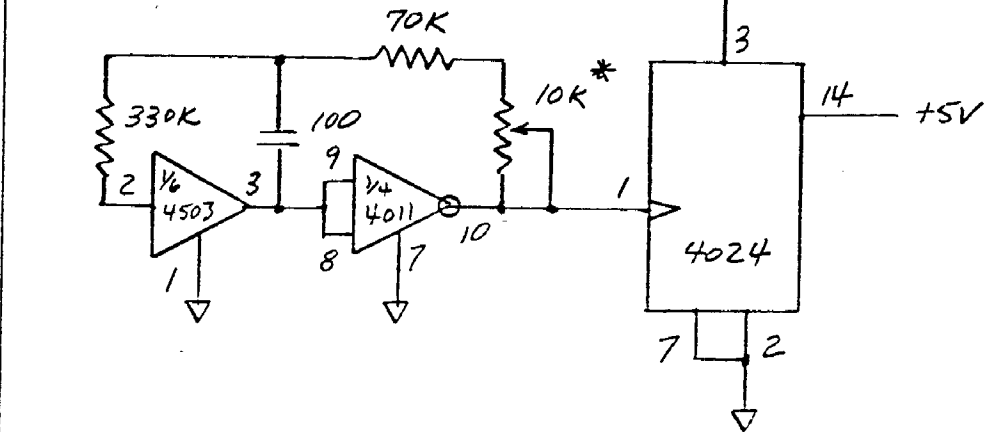
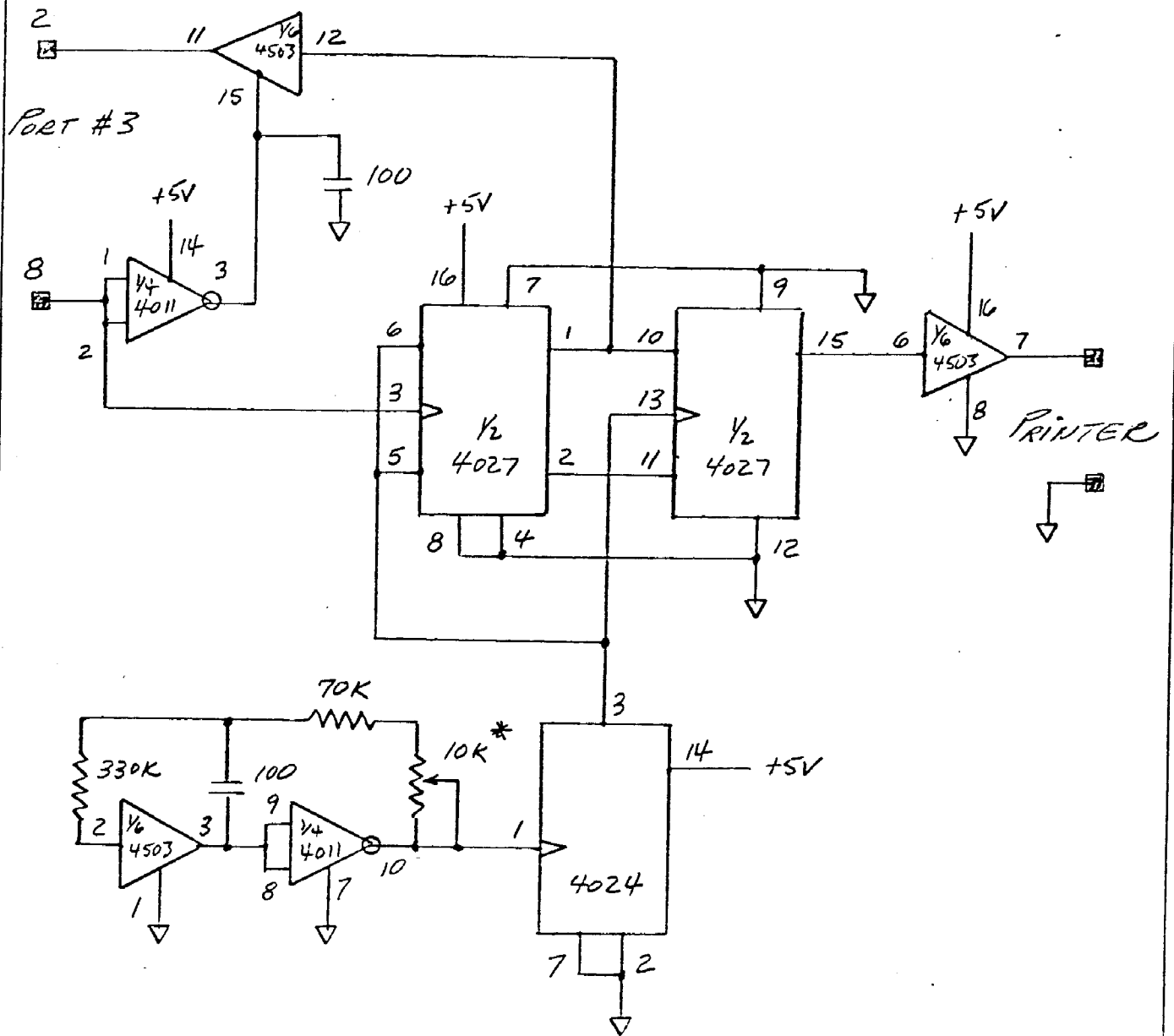
Regarding your inquiry on the availability of the printer interface for the Astro Basic version of the Arcade, I have decided not to produce the hardware do to the limited market. The interface is simple to build however, so I am enclosing a copy of the schematic. If you are not a builder, it would be easier to purchase the old Bally audio cassette interface and adapt it to run your printer. The printer interface and associated software routine was designed to operate a printer with a 300 baud serial inerface with one start bit, eight data bits, and one stop bit. Modifications to both the hardware and software would have to be made in order to operate a Model 33 Teletype. The Model 33 uses a 110 baud signal with one start, eight data, and two stop bits.

If you decide to pursue this project, I will be glad to send you a description of the small machine language program needed to run the printer from Astro Basic.



Al Rathmell

ASTROCADE PRINTER INTERFACE



* ADJUST FOR 38400 Hz