

Line # Statements

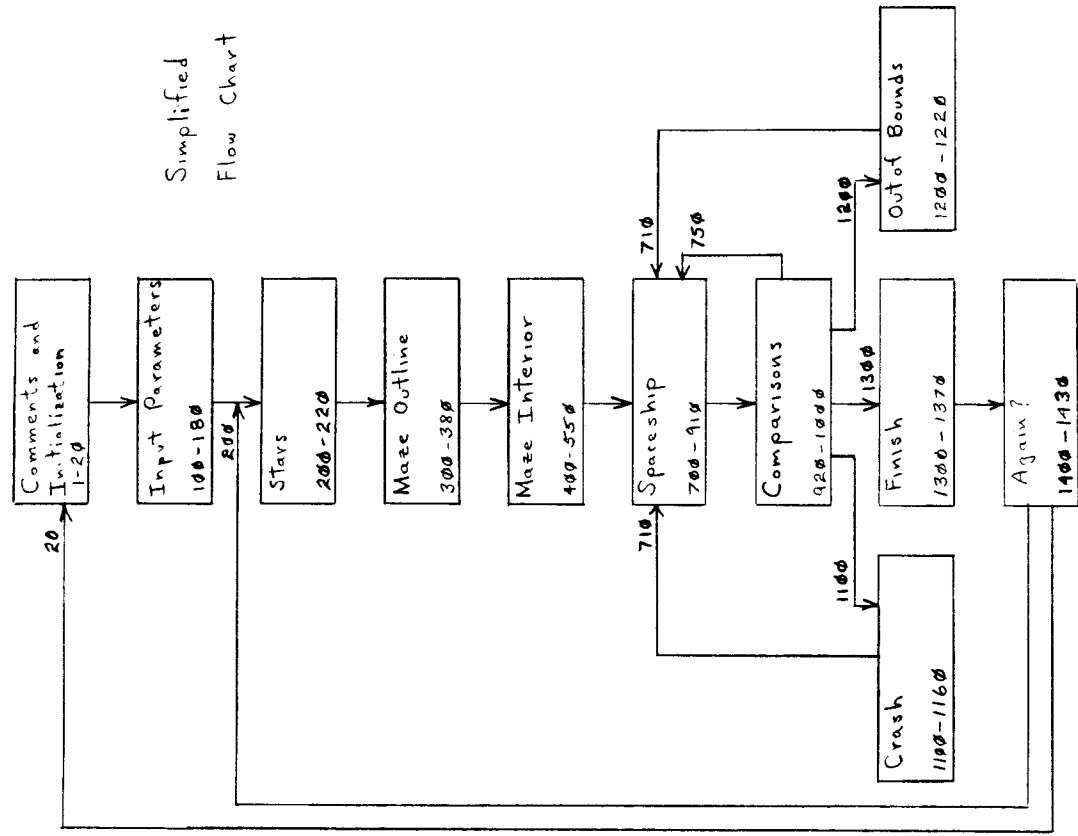
Comments

```

1.100 CRASH
1.110 8(P1)=0;C=C+1
1.120 CX=-7.5;CY=4.4;PRINT C,"CRA
SH!"
1.130 FOR A=1 TO 2.5;BC=80;NT=5
1.140 MUE="4";NEXT A
1.150 NT=0;GOTO 7.1
C
C OUT OF BOUNDS
1.200 NT=5;CY=4.4;PRINT "OUTER LI
MITS--OFF LIMITS";NT=0
1.210 CY=4.4;PRINT "
"
1.220 GOTO 7.1
C
FINISH
1.300 NT=3;CLEAR
1.310 PRINT "FAR OUT! YOU DID IT
";ONLY"#3,C,"CRASH(ES)!"
1.330 PRINT "TIME=";#5,T
1.340 S=((R+1)*H*W)*72/(T*XL)/10
1.350 PRINT "SCORE=";#5,S
1.360 IF S>J J=S
1.370 PRINT "TODAY'S HIGH SCORE="
";#5,J
C
TO PLAY AGAIN
1.400 PRINT "AGAIN?"
1.410 NT=0;INPUT "1-YES 2-SAME
AS LAST GAME"Z
1.420 IF Z=1 GOTO 2.0
1.430 IF Z=2 GOTO 2.0
RETURN

```

J - Last Score
R - Degree of Difficulty
L - Path Size
H - Maze Height x 2
W - Maze Width x 2
X - Spaceship X location
Y - Spaceship Y location
P - # of loops to complete maze interior, on large mazes can take 15-20 minutes to complete
C - Crashes
M - X velocity
N - Y velocity
D - JX input
E - Jy input
G - max movement per loop, if any larger spaceship will jump lines without crashing
S - Score
Z - Again Input
A, Q loops



Simplified Flow Chart

R.M.H.